

SWAT Archaeology – Archaeological Fieldwork Progress Report



Site Name:	Cottington Road, Cliffs End, Thanet
Site Address:	Cottington Road, Cliffs End, Thanet
Site Code:	CRT-EX-19
HER Reference:	-
Week Number:	6
Week Ending:	12/06/2020
Report Number:	6

Client:	WWMartin
Developer:	WWMartin
County:	Kent
Archaeological Officer:	Simon Mason

Author(s):	Dan Worsley
Origination date:	15/06/2020
Edited:	16/06/2020 DB
Circulation:	Simon Mason (KCC), WW Martin (Jay Bartling, Peter Cleford, Derek Anas, Trevor Codd and David Barker) and Dr Paul Wilkinson (SWAT Archaeology)

Archaeological Fieldwork Progress Form

1 WORKS PROGRESS

1.1 Site overview

1.1.1 Work this week consisted of the continuation of the subsoil strip of Phase 1 of the South Site, which concluded on Friday morning. Work has also consisted of the continued hand excavation of the archaeology identified in Phase 1 both on the North and South Sites.

1.1.2 Features identified this week on the South Site:

- 4 large pits containing frequent burnt clay and calcined flint, these pits are situated on the same axis as the other large rubbish pits we have encountered on the South Strip.
- Continuation of the large medieval feature.
- A new series of linear features running E-W, NW-SE and NE-SW continuing into the Northern LOE.
- Continuation of the large Iron Age feature situated at the Western end of the strip, including several features truncating it. Two dark patches have been identified, one in the NW and one in the SW, both containing higher frequencies of pot and bone. There are also several linear features that appear to truncate the feature.

1.1.3 The large feature situated on Phase 1 of the North Site had a series of 11 hand auger points excavated across it on a N-S and E-W alignment to ascertain the depth of the feature. Four noticeable fills were identified during the process. The feature appears to be concave in profile on the E- axis but is flat and getting deeper towards the Northern LOE. The feature could be a continuation of the Romano British Quarry identified by Wessex Archaeology in Trench 13, which had a depth of 1.5m. Natural ground was encountered at:

E-W Axis:

NHA 1.1 – 0.0m

NHA 1.2 – 0.87m

NHA 1.3 – 1.07m

NHA 1.4 - 1.24m

NHA 1.5 – 1.08m

NHA 1.6 – 0.4m

NHA 1.7 – 0.5m

N-S Axis:

NHA 1.8 – 1.2m

NHA 1.9 – 1.2m

NHA 1.10 – 1.43m

NHA 1.11 – 1.39m

1.1.4 WWMartin when on site mentioned that they had a 10m run of drainage that they are intending on excavating through the corner of the Archaeological exclusion zone to the South of the site. They believe that they have been given permission for this work to continue under a watching brief condition.

1.1.5 The site was surveyed on Thursday.

1.1.6 Simon Mason (KCC) came out to site on Friday to conduct a site-monitoring visit; details discussed during this meeting are in Section 2 of this weekly progress report.

1.1.7 Two cremations have been identified, one on the North Site and one on the South. We have now received the burial license.

1.2 Works Carried Forward

1.2.1 Continuation of the hand excavation of both Phase 1 areas.

1.3 Works Carried Out

1.3.1 Continuation of Phase 1 subsoil strip of the South Site and the continuation of the hand excavation of both Phase 1 areas.

1.3.2 On the North site 41 features were excavated this week.

1.3.3 On the South site 22 features were excavated this week. We have focused on excavating the archaeology along the Western LOE of the Strip, which has produced a series of possible segmented and intercutting prehistoric linear systems as well as some large wide medieval linear systems.

1.4 Forthcoming Works

1.4.1 Continuation of Phase 1 excavation.

2 Scheduled Meetings

2.1 Meeting on site with Paul Wilkinson (SWAT), Dan Worsley (SWAT), Ali McKeever (SWAT), Matt Goulden (SWAT), Derek Amas (WWMartin), Jay Bartling (WWMartin) and Simon Mason (KCC).

Points discussed:

North Site:

- Additional hand excavated interventions in Trackway to be implemented in order to establish any trends in the possible metallurgy of the base of the feature. Then take one or two of these interventions and extend them to 5-10m with the machine to create large open blocks of the feature.
- Additional profile interventions in linears to increase sample size.
- Machine slot through possible Colluvial deposit that the Trackway and associated linears truncate.
- Overlay the site survey with WWMartin's groundwork's plan so we can then discuss where to implement slots through the large NE feature.

South Site:

- Same issues regarding the large features, overlays needed and all truncating archaeology to be excavated before machine slots can be put in. The large features in this area will also be investigated with the hand auger first.
- Simon Mason suggested that we characterise the archaeology and work out the relationships on a broader scale before we start concentrating on clearing areas.

3 RESOURCES

3.1 SWAT Archaeology Personnel

3.1.1 SWAT Archaeology staff for this week included:

Project Director:	Dr. Paul Wilkinson	
Project Manager:	Dan Worsley BA MA	5 days
Project Supervisors:	Ali McKeever + Matt Goulden	5 days
Site Surveyor:	Jonny Madden	1 day

Site Archaeologists:	Ali McKeever	5 days
	Matt Goulden	4 days
	Lesley Jones	5 days
	Neil Chaney	4 days
	Sonni Chamberlain	5 days
	Django Rayner	1 days
	Scott H	5 days
	E. Burrows	3 days
	V. Burrows	3 days
	A. Burrows	5 days
	Steve .T	5 days
	Chris Cole	5 days
	Mark Foulds	2 days
	Daisy Foulds	

3.2 Sub-Contractors/Equipment Hire

1 x 13T 360 Excavator and 1 x 9T dumper (South site)



Plate 1 Completed Phase 1 South Strip



Plate 2 Intercutting features [3147], [3149], [3152], [3155], [3157], [2159], [3165] on the South Site

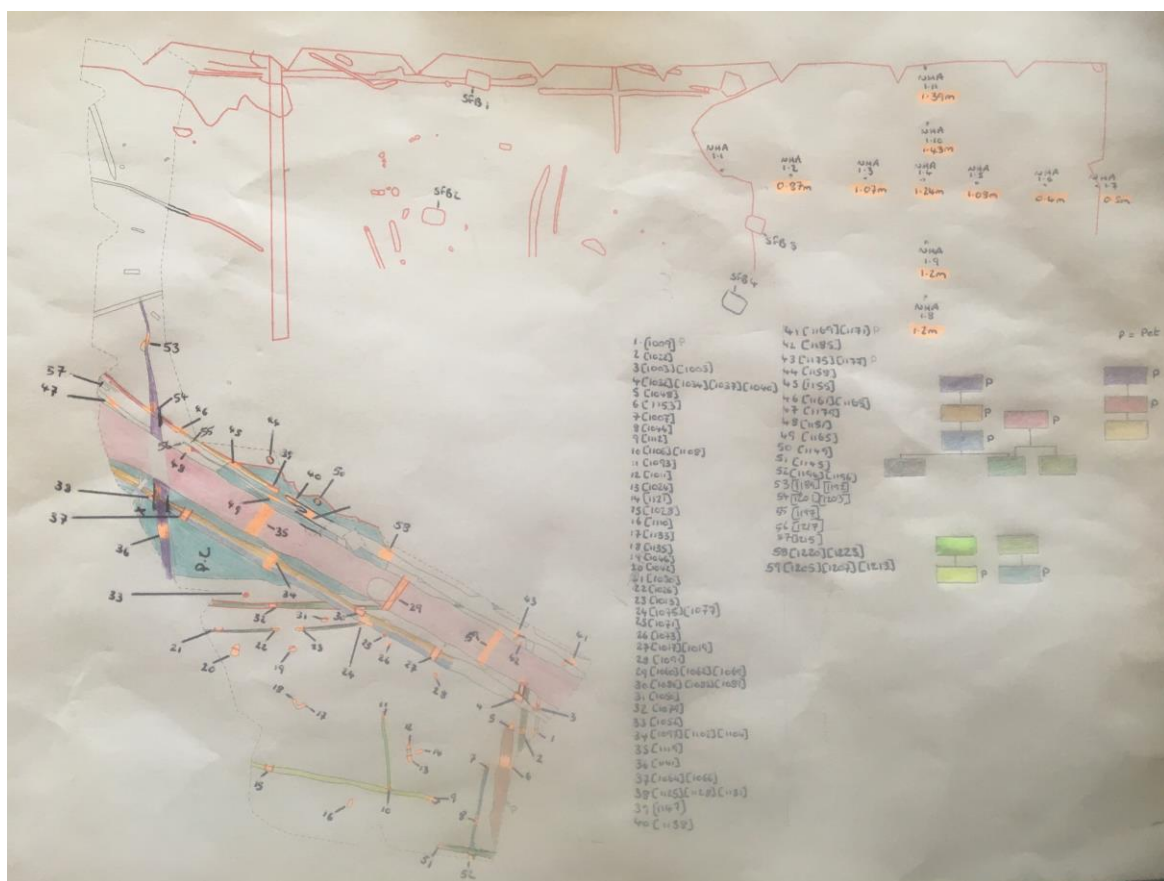
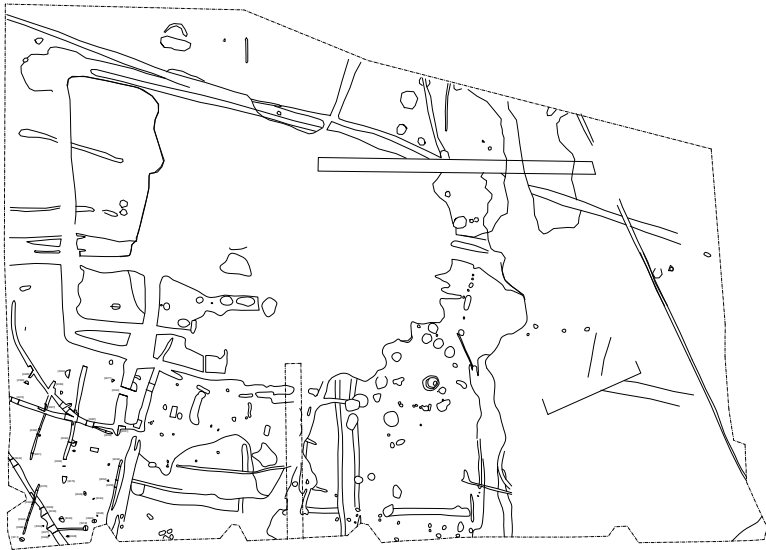
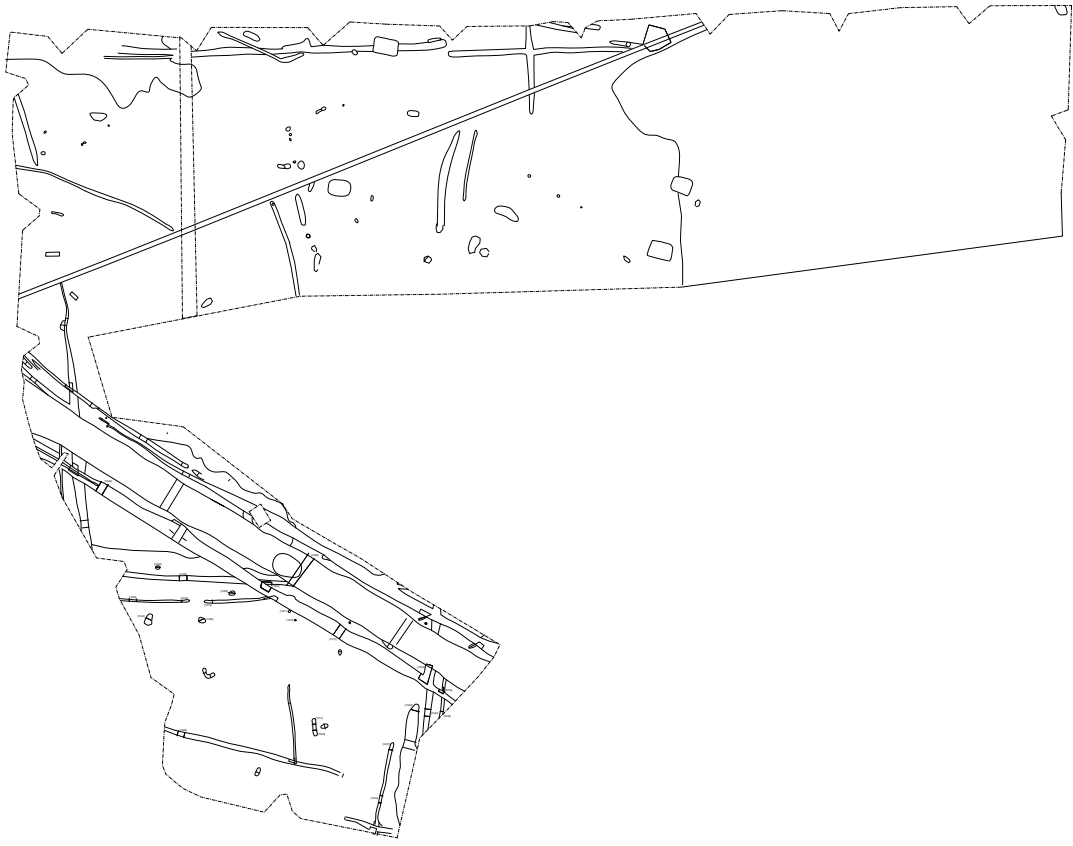
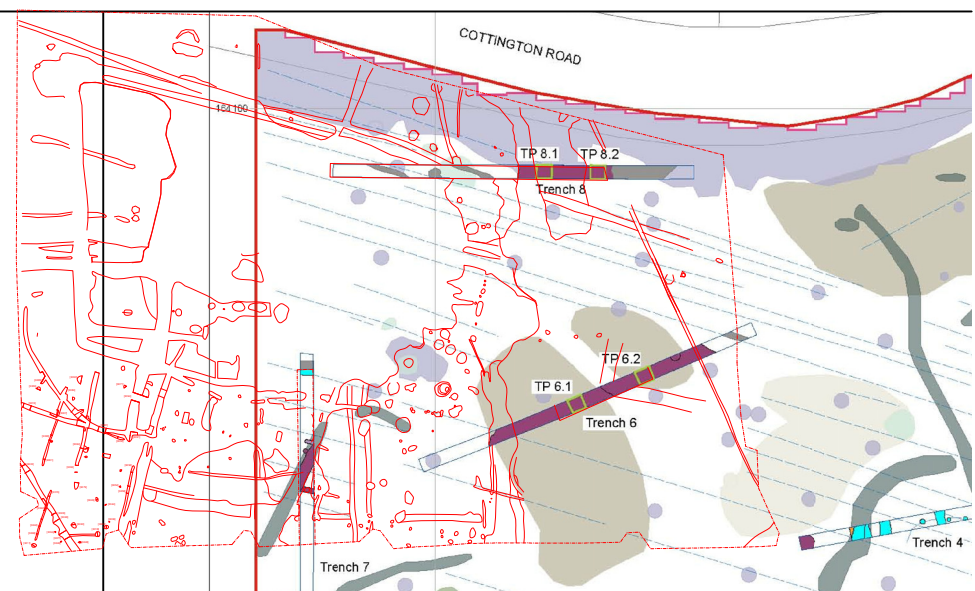
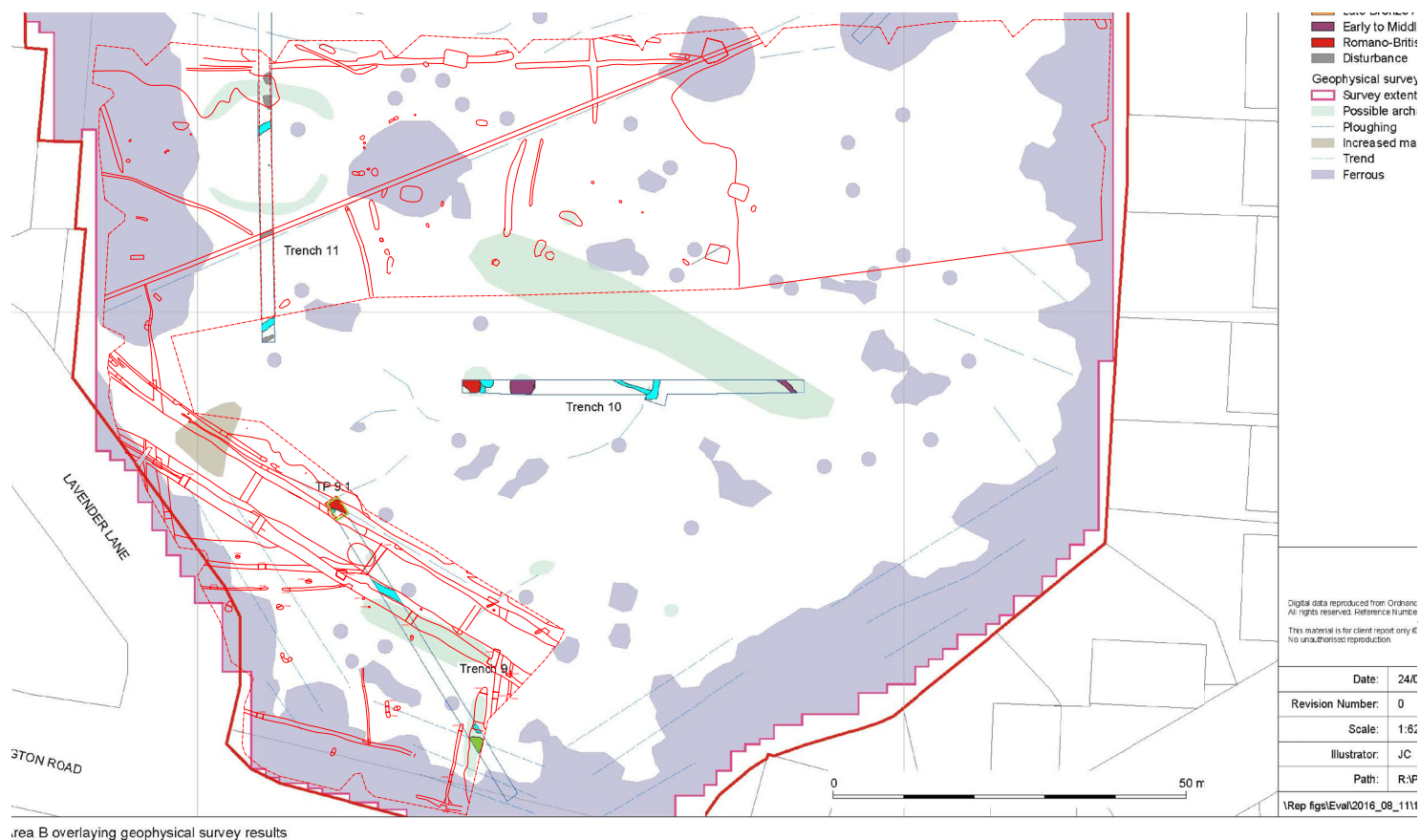


Plate 3 Phased plan of North Phase 1 according to stratigraphy



Plate 4 Phased plan of South Phase 1 according to stratigraphy





Cottington Road, Cliffsend – Archaeological Sequence of Works

